



Kings Lodge, SW19 8PL

Superior Student House Share

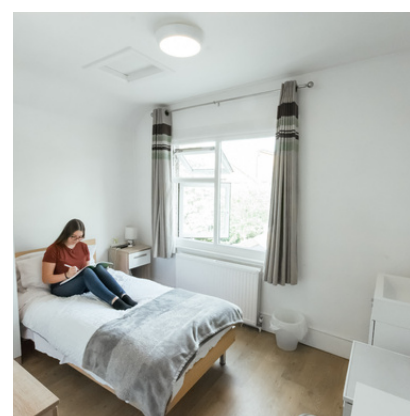
What's included?

- Kitchen equipment (cutlery, plates, saucepans, etc)
- Bed Linen
- Towels are NOT included
- WiFi
- Laundry Facilities (Washing Machine and Tumble Dryer, Iron)
- Hairdryer
- TV and DVD player
- Communal areas are cleaned daily, study-bedroom and bath/shower rooms are cleaned weekly

Location

Click here to see the location on Google Maps

Kings Lodge is in the middle of Wimbledon, just a few minutes away from all facilities. The school is only 10 minutes away on foot.



Bedrooms

The bedrooms are bright and well decorated:

- 9 en-suite bedrooms
- Twin, Single and Double rooms available
- Each room includes a bed, secure safety deposit box, chair, desk, wardrobe, TV.

Communal Facilities

- A large, well equipped kitchen/dining/sitting area with all facilities including cooker, microwave, dishwasher, fridge/freezer, TV with cable connection & DVD player
- Laundry room with iron, washing machine & clothes dryer
- Sunny outside garden
- WIFI throughout the building

Please Note

- No smoking is allowed anywhere in the house or garden
- There is a maximum of 11 students at any time in Kings Lodge
- Minimum age: 18
- Assisted check-in, without fee, on Saturdays only between 13:00 and 17:00. Outside these times there is a key box facility for self check-in between 17:00 & 20:00 on Saturdays and on Sundays between 09:00 and 17:00.
- If you prefer an assisted check-in outside these times there is a charge of £80.00. Paid assisted check-in is available on Saturdays between 17:00 - 20:00 and on Sundays between 09:00 - 20:00.
- CCTV in communal areas only



Wimbledon School of English Limited Registered in England No. 2595499



Wimbledon School of English,
41 Worples Road,
Wimbledon
London SW19 4JZ

T +44 20 8947 1921
F +44 20 8944 0275
E info@wimbledon-school.ac.uk
www.wimbledon-school.ac.uk



Cottenham 1, SW20 0DS

Standard Plus

Student House Share

What's included?

- Kitchen equipment (cutlery, plates, saucepans, etc)
- Bed linen
- WiFi
- Laundry facilities (washing machine and iron)
- TV in each room
- Communal areas are cleaned weekly, study-bedroom and bath/shower rooms are cleaned weekly
- Towels are NOT included.

Location

[Click here](#) to see the location on Google Maps

Cottenham 1 is located in Raynes Park, approximately 30 minutes walk from Wimbledon School of English, or a 20-minute bus journey from Wimbledon Town Centre and the school.



Bedrooms

The bedrooms are bright and well decorated:

- 2 large en-suite bedrooms
- 2 single rooms with private bathroom
- 1 standard room with shared bathroom
- 1 large room with shared bathroom
- Every room includes a bed, secure safe, chair, desk and storage cupboard.

Communal Facilities

- Large, well-equipped kitchen and dining areas with all facilities including cooker, microwave, dishwasher, fridge/freezer
- Laundry room with iron and washing machine
- Sunny outside garden
- Wifi throughout the building.

Please Note

- No smoking is allowed anywhere in the house or garden
- There is a maximum of 6 students allowed at any one time in Cottenham 1, so bedrooms cannot be shared.
- CCTV in communal areas only
- Minimum age: 18
- Assisted check-in, without fee, on Saturdays only between 13:00 and 17:00. Cottenham Park does not have any key box facility.
- If you prefer an assisted check-in outside these times there is a charge of £80.00. Paid assisted check-in is available on Saturdays between 17:00 - 20:00 and on Sundays between 09:00 - 20:00.





Wimbledon
School of English
London

Engage, Educate, Empower

Cottenham 2, SW20 0DS

Standard Plus

Student House Share

What's included?

- Kitchen equipment (cutlery, plates, saucepans, etc)
- Bed linen
- WiFi
- Laundry facilities (washing machine and iron)
- TV in each room
- Communal areas are cleaned weekly, study-bedroom and bath/shower rooms are cleaned weekly
- Towels are NOT included.

Location

Click here to see the location on Google Maps

Cottenham 2 is located in Raynes Park, approximately 30 minutes walk from Wimbledon School of English, or a 20-minute bus journey from Wimbledon Town Centre and the school.



Bedrooms

The bedrooms are bright and well decorated:

- 2 large en-suite bedrooms
- 2 single rooms with private bathroom
- 1 standard room with shared bathroom
- 1 large room with shared bathroom
- Every room includes a bed, secure safe, chair, desk and storage cupboard.

Communal Facilities

- Large, well-equipped kitchen and dining areas with all facilities including cooker, microwave, dishwasher, fridge/freezer
- Laundry room with iron and washing machine
- Sunny outside garden
- Wifi throughout the building.

Please Note

- No smoking is allowed anywhere in the house or garden
- There is a maximum of 6 students allowed at any one time in Cottenham 2, so bedrooms cannot be shared.
- CCTV in communal areas only
- Minimum age: 18
- Assisted check-in, without fee, on Saturdays only between 13:00 and 17:00. Cottenham Park does not have any key box facility.
- If you prefer an assisted check-in outside these times there is a charge of £80.00. Paid assisted check-in is available on Saturdays between 17:00 - 20:00 and on Sundays between 09:00 - 20:00.



Wimbledon School of English Limited Registered in England No. 2595499

Accredited by the
BRITISH COUNCIL
for the teaching
of English in the UK



Quality
English



Wimbledon School of English,
41 Worples Road,
Wimbledon
London SW19 4JZ

T +44 20 8947 1921
F +44 20 8944 0275
E info@wimbledon-school.ac.uk
www.wimbledon-school.ac.uk



Queens Lodge, SW20 8QE

Superior Student House Share

What's included?

- Kitchen equipment (cutlery, plates, saucepans, etc)
- Bed linen
- WiFi
- Laundry facilities (washing machine and tumble dryer, iron)
- TV and DVD player
- Communal areas are cleaned daily, study-bedroom and bath/shower rooms are cleaned weekly
- Towels are NOT included

Location

[Click here](#) to see the location on Google Maps

Queens Lodge is located between Wimbledon Centre and Raynes Park, approximately 10 minutes walk to each. The house is about 10 minutes walk to Wimbledon School of English.



Bedrooms

- 5 en-suite bedrooms
- 1 bedroom with private shower-room
- Each room includes a bed, secure safe, chair, desk, TV, and storage cupboard

Communal Facilities

- A large, well equipped kitchen/dining/sitting area with all facilities including cooker, microwave, dishwasher, fridge/freezer, TV with cable connection & DVD player.
- Laundry room with iron, washing machine & clothes dryer
- Sunny outside garden
- Wifi throughout the building

Please Note



- No smoking is allowed anywhere in the house or garden.
- There is a maximum of 6 students allowed at any one time in Queens Lodge so bedrooms cannot be shared.
- Minimum age: 18
- Assisted check-in, without fee, on Saturdays only between 13:00 and 17:00. Outside these times there is a key box facility for self check-in between 17:00 & 20:00 on Saturdays and on Sundays between 09:00 and 17:00.
- If you prefer an assisted check-in outside these times there is a charge of £80.00. Paid assisted check-in is available on Saturdays between 17:00 - 20:00 and on Sundays between 09:00 - 20:00.
- CCTV in communal areas only

Wimbledon School of English Limited Registered in England No. 2595499



Wimbledon School of English London

Engage, Educate, Empower

Justin James, SW19 4JZ Superior Serviced Hotel Room

What's included?

- Continental breakfast
- Kitchen equipment (cutlery, plates, saucepans, etc)
- Bed linen and towels (laundered weekly)
- WiFi
- Laundry facilities include washing machine, dryer, iron & ironing board
- Weekly cleaning

Location

[Click here](#) to see the location on Google Maps

This really is a great location right next to the school and just minutes away from the station, shops, restaurants, bars, cafes and other facilities in central Wimbledon

Bedrooms

The bedrooms are light, bright and well decorated:

- En-suite single bedrooms
- Large double en-suite bedrooms
- Twin en-suite bedrooms
- TV, kettle and hairdryer in each room
- Every room includes a bed, secure safe, chair, desk and storage cupboard



Facilities

- Shared kitchen/Laundry room
- Communal sitting/dining room
- Lovely private outside courtyard seating area

Please Note



- No smoking is allowed anywhere in the residence
- CCTV in communal areas only
- Minimum age: 18
- Key box facility for self check-in between 13:00 & 20:00 on Saturdays and between 09:00 and 17:00 on Sunday
- There is no assisted check-in available for Justin James

Wimbledon School of English Limited Registered in England No. 2595499



Wimbledon School of English,
41 Worple Road,
Wimbledon
London SW19 4JZ

T +44 20 8947 1921
F +44 20 8944 0275
E info@wimbledon-school.ac.uk
www.wimbledon-school.ac.uk



**Wimbledon
School of English**
London

Engage, Educate, Empower

One Penrhyn Road, Kingston

Available Saturday 1st July till Saturday 26th August 2023

Superior

Student Residence

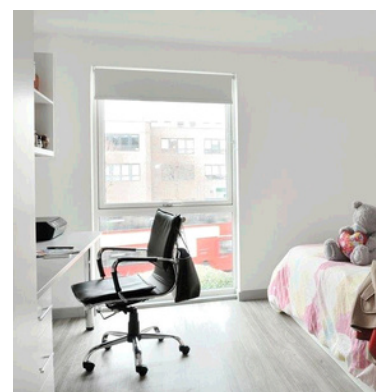


We have access to a beautiful luxury student residence during the summer months, based in the heart of Kingston and just minutes away from the river, cafes and shopping centre. Take a look at some of the great benefits below, plus our photo gallery.

NB Minimum age 18

Why is it a winner?

- Stylish, modern, and comfortable
- Walking distance to Kingston river, shopping centre, cafes and restaurants
- Overnight guests allowed (for up to 3 nights per week)
- Fully fitted kitchen facilities in your room. Microwave, hob and fridge. No kettle. Kitchen equipment can be purchased locally
- Private bathroom
- 24-hour security
- CCTV in communal areas only
- Common room with pool tables, TVs and study areas
- The chance to meet and practise your English with international students from other schools and universities
- Excellent transport links – just 12 minutes by train to Wimbledon
- 40 minutes on bus 57, direct to the school
- 30 minutes by train to Central London (London Waterloo)



Please Note

To apply, download and complete the application form, and then send onto elaine@wimbledon-school.ac.uk
This accommodation is not managed by Wimbledon School of English

Wimbledon School of English Limited Registered in England No. 2595499



Wimbledon School of English,
41 Worple Road,
Wimbledon
London SW19 4JZ

T +44 20 8947 1921
F +44 20 8944 0275
E info@wimbledon-school.ac.uk
www.wimbledon-school.ac.uk